

# The **Ultimate** Electric Fusion Fluxer

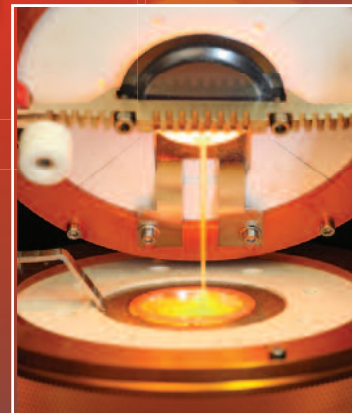


**K1**  
**PRIME**

Patent  
Pending



K1 furnace controls the temperature to +/- 1 degree during the fusion process



K1 furnace pouring into a mold for a perfect bead. Mold temperature is also controlled for optimum performance

# The **Ultimate** Electric Fusion Fluxer

**Katanax has established itself** as the leader in electrical fusion equipment. And now, with our newest fluxer – the K1 Prime – you can benefit from the latest advances in our technology.

The Katanax K1 Prime fluxer combines the ultimate in fusion accuracy with all the advantages of electric power:

- ▶ Safety – no gases used
- ▶ Controlled heating
- ▶ Energy efficiency
- ▶ Convenience – only a 120-volt outlet required
- ▶ Ease of installation – plug it in, turn it on!

Let's examine each of these benefits to see what it means for you.

## No Need for Gas

No gas says it all. That means enhanced safety for people and facilities alike. There's no need for you to have gas piped in or sitting next to the system in bulky tanks. Some locations also make using either of those options impossible.

Gas fluxers are also notorious for temperature control issues, which affect program reproducibility and, thus, precision of analysis. With gas, settings also need to be adjusted for different altitudes, sometimes requiring additional oxygen injection systems to compensate and reach optimal temperature. This "fix" also comes with additional expenses, of course.

All of these issues are avoided with the K1 Prime.

## Just Plug It In

Because the K1 Prime is electric all you need to operate the unit is a standard 120-volt outlet. That's it. No piping, tanks, special injection systems, additional venting or constant tweaking of settings in the hope of achieving a semblance of accuracy.

The K1 Prime delivers from the get-go.

You not only benefit immediately from the ease of installation and operation with the K1 Prime, you also benefit from the ways in which electrical power surpasses gas.

Katanax K1 Prime electric fusion system has precise temperature control allowing for better reproducibility and thus more precise analysis.

You also benefit from optimal temperature control and homogenization with completely independent heaters for crucible and mold.

Heat dissipation is less than that of a hair dryer – the casing remains cool to the touch without need for a powerful vent hood. An integrated safety shield helps prevent accidental contact.

You can run the K1 Prime at either 120 or 240 VAC. There is also USB connectivity for increased convenience and accessibility.

## Ease of Use

The K1 Prime is also simple to use. A sleek, color, LCD touch-screen interface makes for easy and efficient operation. It is entirely automated for the ultimate in fusion operations. The K1 Prime comes pre-loaded with various fusion programs that can be used as is or customized for your particular routines:

- ▶ Oxides
- ▶ Minerals
- ▶ Metals
- ▶ Alloys
- ▶ Sulfides...and more.



*Illustration of a fusion program in graphical form. This allows you to see all of the fusion parameters in a easy to understand format.*

All programs can be saved, renamed, deleted or copied, just as with computer files. Only the preset programs are protected to avoid accidental overwriting.

## Versatility and Productivity You Can Count On

Use the K1 Prime for preparing glass disks (beads) for XRF, or for preparing peroxide or pyrosulfate fusions. An optional solution stirrer provides for ICP and AA solution making ability. You can also do solid oxidations with the K1 Prime.

Whatever your routine, you'll achieve a throughput of 5 to 7 samples per hour. In addition, there is a user-adjustable holding temperature enabling the temperature between fusions to be maintained minimizing initial ramping time.

## Unmatched Value

We invite you to compare the Katanax K1 Prime against any competitor's fluxers.

When you consider the full range of features, user benefits and value which the K1 Prime offers you — without the additional expenses or concerns typically associated with gas fluxers — we believe you'll understand why we can say the K1 Prime is the Ultimate Electric Fusion Fluxer.

We back up that claim with a full one-year limited warranty and unmatched customer support.

## Contact Us Today

To learn more about how the K1 Prime Electric Fusion Fluxer can benefit you, call us at (+1) 418 657-6201 or email us at [info@katanax.com](mailto:info@katanax.com). For further information, you may also visit our website: [katanax.com](http://katanax.com).

## Technical Specifications

|                     |                                  |
|---------------------|----------------------------------|
| <b>Voltages:</b>    | 110-127VAC 220-240VAC (50-60 Hz) |
| <b>Power (max):</b> | 1300 W                           |
| <b>Height:</b>      | 39.5 cm (15.6")                  |
| <b>Width:</b>       | 27.5 cm (10.9")                  |
| <b>Depth:</b>       | 58.5 cm (23.1")                  |
| <b>Mass:</b>        | 30 kg (66 lbs)                   |

CE

## Complete K1 Prime Kit

- fluxer (K1 main unit)
- mold heating/cooling unit
- solution agitation unit
- unbreakable Teflon beaker
- mold holder
- power cord
- instruction manual
- tool kit (hex keys, spare fuses...)

**Katanax**  
a SPEX SamplePrep Company

Katanax Inc.  
2014 Cyrille-Duquet  
Suite 180  
Quebec, QC  
Canada G1N 4N6

SPEX SamplePrep  
15 Liberty Street  
Metuchen, NJ 08840-9978  
Tel: 732.623.0465  
Fax: 732.906.2492  
800.522.7739 (800.LAB.SPEX)  
E-mail: [sampleprep@spexcsp.com](mailto:sampleprep@spexcsp.com)  
[www.spexsampleprep.com](http://www.spexsampleprep.com)